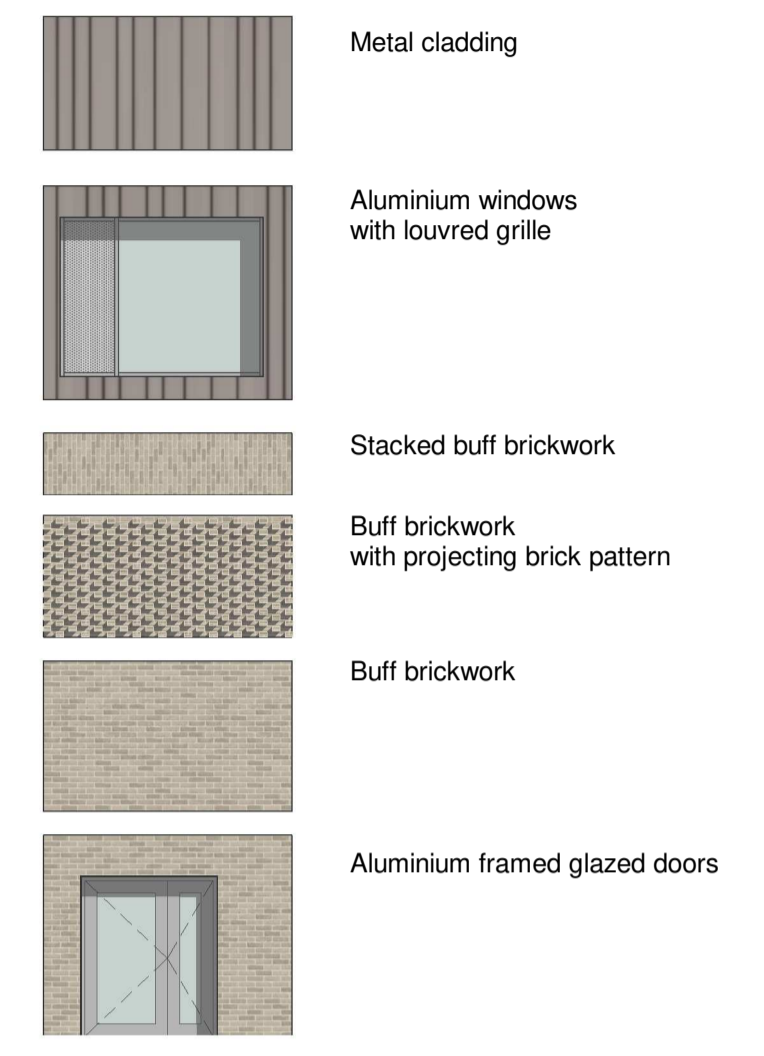


○ BOWKER SADLER PARTNERSHIP LIMITED
 ■ THIS DRAWING IS THE SUBJECT OF COPYRIGHT WHICH VESTS IN BOWKER SADLER PARTNERSHIP LIMITED. IT IS AN INFRINGEMENT OF COPYRIGHT TO REPRODUCE THIS DRAWING, BY WHATEVER MEANS, INCLUDING ELECTRONIC, WITHOUT THE EXPRESS WRITTEN CONSENT OF BOWKER SADLER PARTNERSHIP LIMITED WHICH RESERVES ALL ITS RIGHTS.
 BOWKER SADLER PARTNERSHIP LIMITED ASSERTS ITS RIGHTS TO BE IDENTIFIED AS THE AUTHOR OF THIS DESIGN.
 ■ DRAWING NOT TO BE SCALED.
 ■ REPORT ERRORS & OMISSIONS TO ARCHITECT.
 ■ CHECK ALL DIMENSIONS ON SITE.
 ■ DRAWING TO BE READ IN CONJUNCTION WITH THE HEALTH AND SAFETY PLAN AND ALL RELEVANT RISK ASSESSMENTS

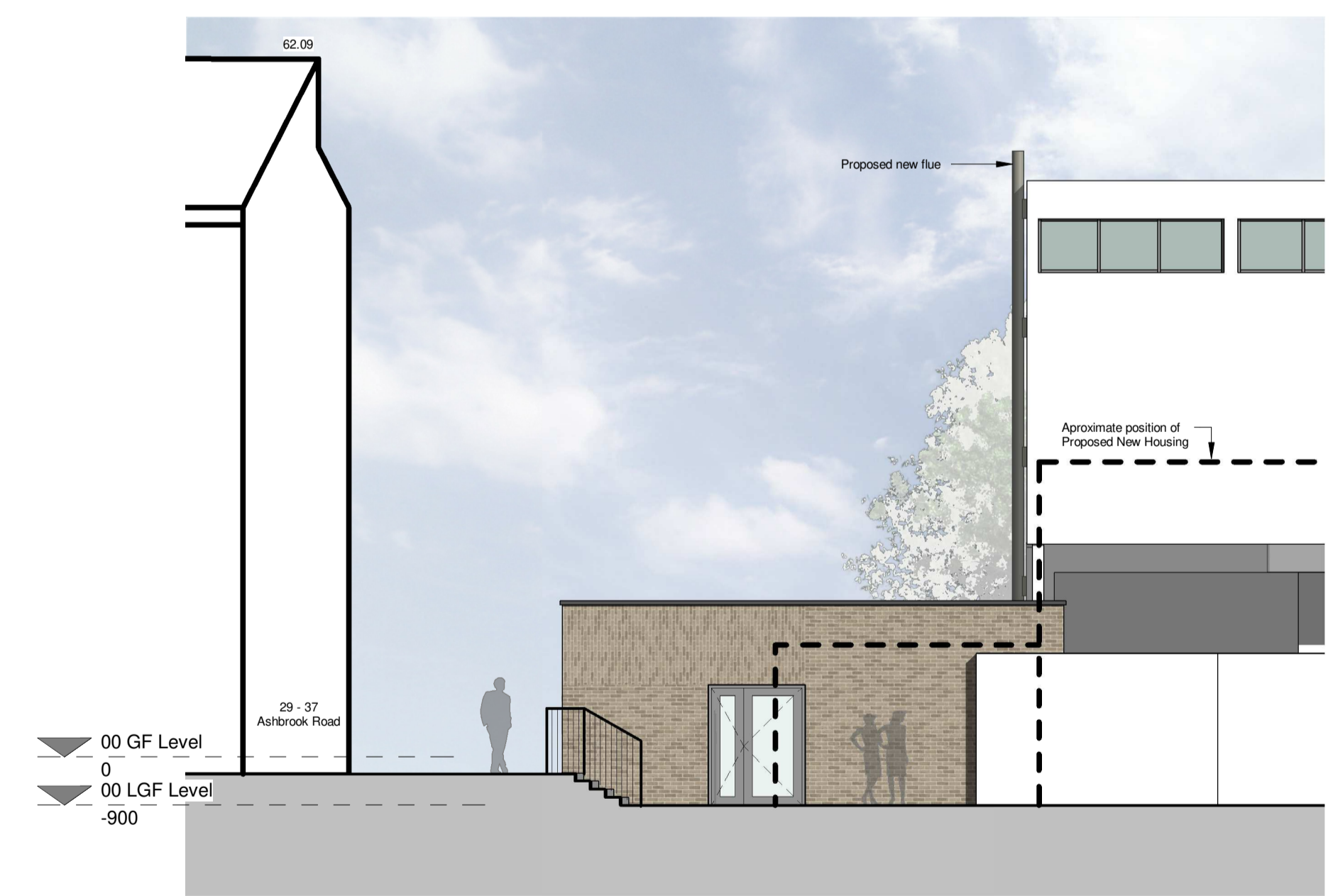


Materials Key
1 : 100

South Elevation - Resistant Materials
1 : 100



West Elevation - Resistant Materials
1 : 100



East Elevation - Resistant Materials
1 : 100

P01 15.09.20 CY Planning Public Consultation issue AC

Rev.	Date	Drawn	Check

Project:
City of London Academy Highgate Hill

Client:
Department for Education

Drawing:
Proposed Elevations - Technology Block

Scale	Sheet Size	Drawn by	Checked by	Date
1 : 100	@ A1	CY	AC	21.08.20

BOWKER SADLER ARCHITECTURE
 A: Hatherlow House, Hatherlow, Romiley, Stockport SK6 3DY
 T: 0161 406 7333
 E: office@bowker-sadler.co.uk
 W: www.bowker-sadler.co.uk

Project No: Originator: Zone: Level: Type: Discipline: Cat / No.: Revision:
 CLAHH-BSA-02-ZZ-DR-A-3002-P01
 Status:

Public Consultation

